



South West Wind Energy Developers Forum

Cheryl Hiles, Director, Regen SW

Agenda

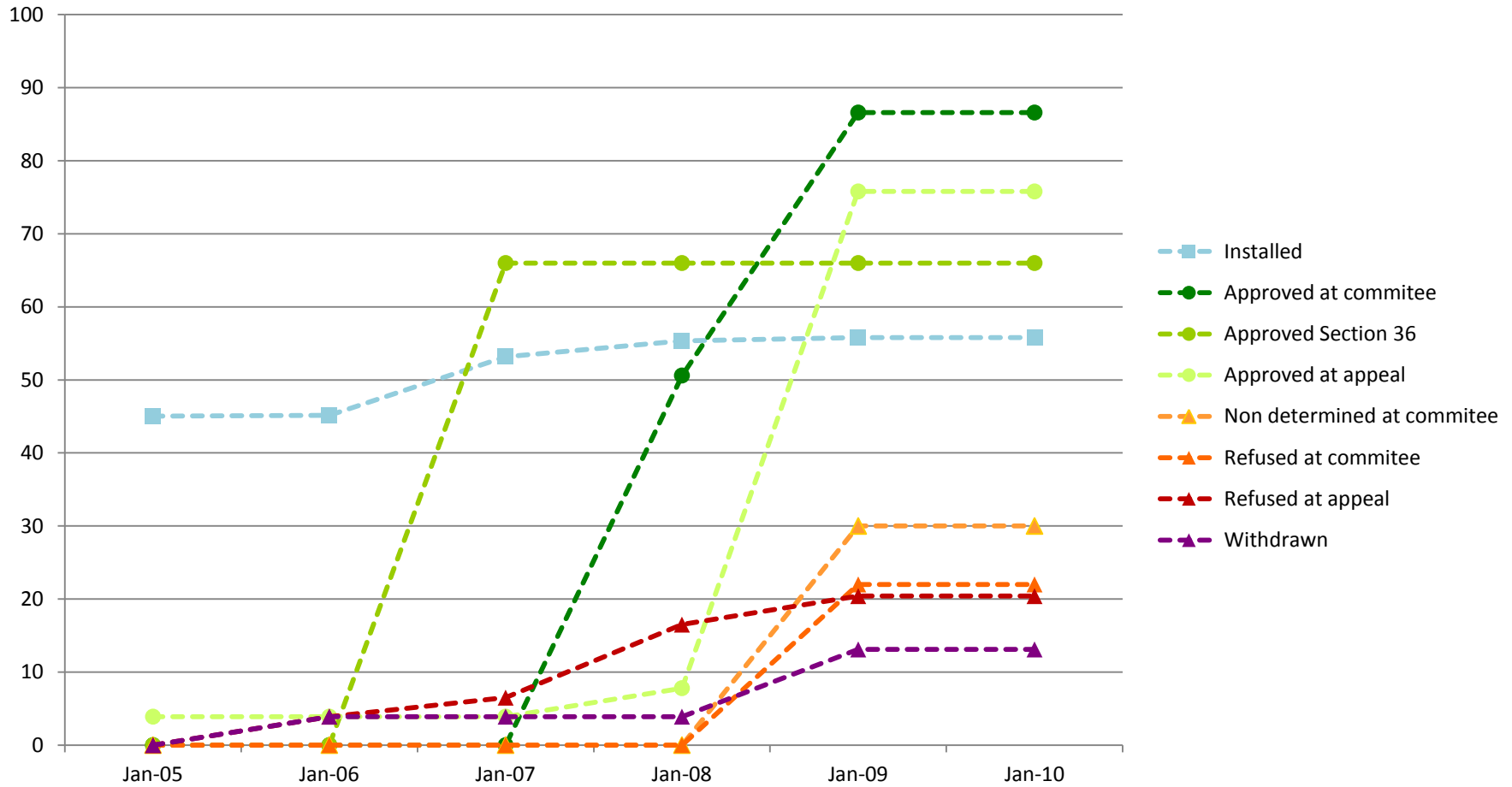
- Roundtable introductions & activities in the SW
- Planning: policy, decisions, intelligence & support
 - Cheryl Hiles, Regen SW
 - Adrian Lea, Cornwall Council
 - Discussion
- Planning: progress and the impact of localism
 - Progress in the SW, Regen SW annual survey
 - Communities for Renewables; Regen SW's strategic response to localism
 - Questions
- Close

Planning

- Policy or politics?
- No PPS or RSS
- Policy void
- Positive strategy required
- Community led initiatives
- Areas of search!



Data and intelligence



Policies

“Please note that this guidance document has been adopted by Torridge District Council but it does not constitute a Development Plan Document nor is it a Supplementary Planning Document and therefore it does not hold any formal planning policy or statutory development plan status. One of the main aims of the document is to provide an engagement tool between the relevant parties. It is hoped that the guidance will result in applicants and/or developers approaching the Council at the earliest opportunity in order to set up discussions between the relevant stakeholders and to ensure that all issues are addressed before an application is put forward. **The document has also been provided as an informal guidance document for Torridge District Council staff.**”



Torridge District Council Wind Energy Policy



Decisions

Silton, Dorset

Appeal Submitted - 19 September 2011

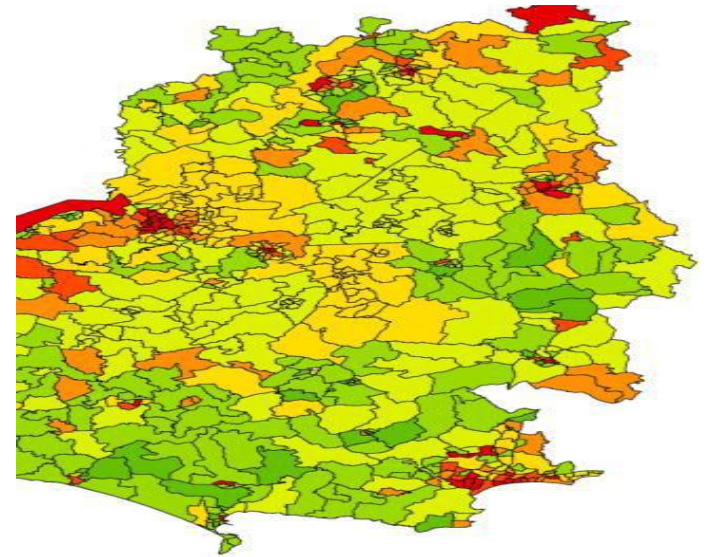
“We have submitted an appeal for the refusal of our wind park near Silton that would make green energy for thousands of homes, as the latest report shows that Dorset still has one of the poorest records on green energy in Britain.

Despite being twice recommended for approval by its own planning officers, North Dorset District Council’s planning committee turned down our plans for just four windmills at a meeting in March, leaving Dorset as one of the last counties in England still to have no large-scale working windmills at all.” *Ecotricity*



Local authority membership

- Policy updates
- Market intelligence
- Access to national policy makers
- Industry contacts
- Strategy for economic development
- Support on financing renewable energy
- Support for community renewables
- Support on communicating with the public

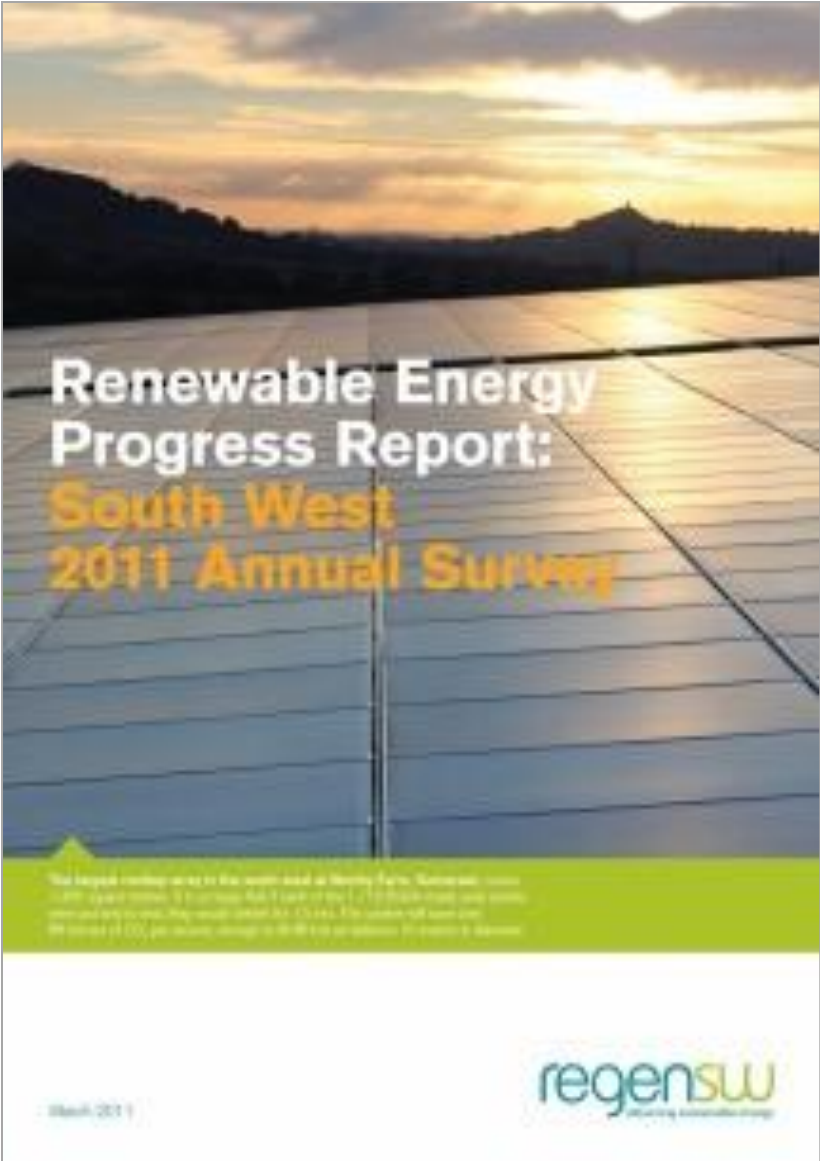


Business Membership

- Meet the buyer opportunities / introductions
- Market insights & policy responses
- SW industry voice
- Enhanced business profile
- Your views

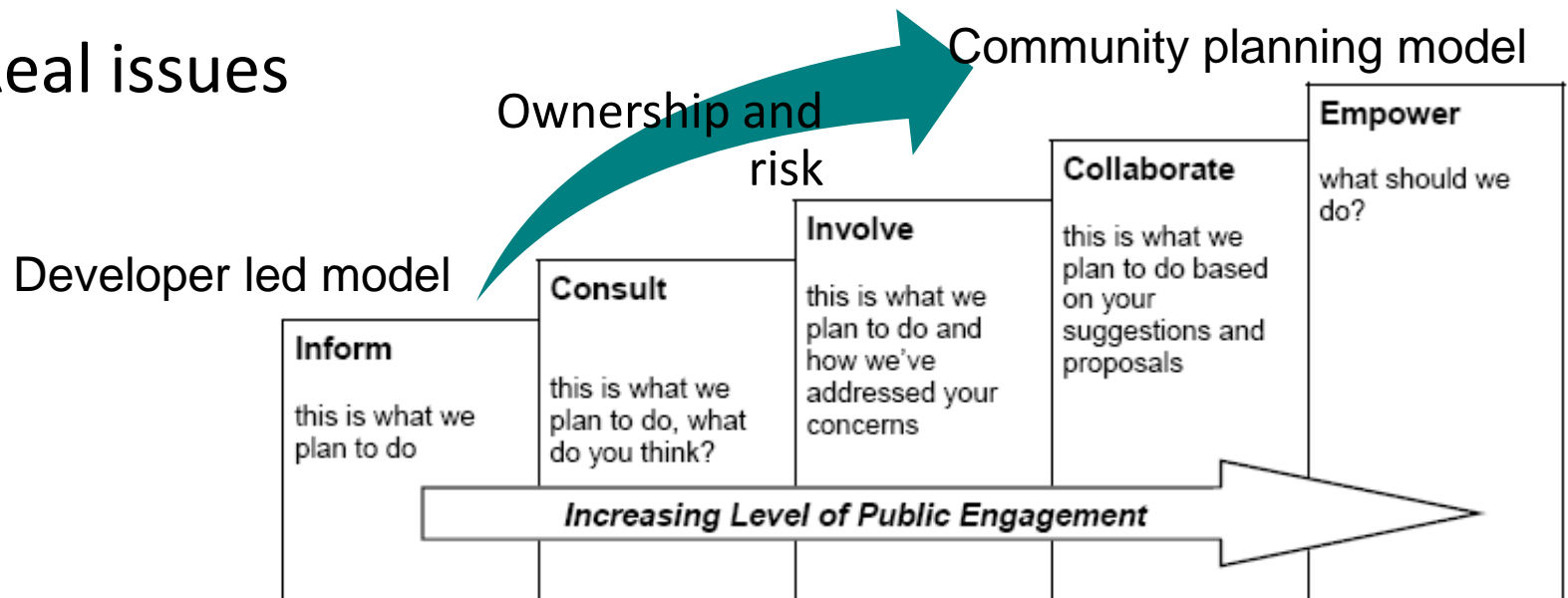


Cornwall Council: a proactive example



Communities for Renewables

- Localism rules
- What about legally binding targets?
- Strong community interest
- Real issues



communitiesforrenewables

Home | Info and resources | Inspiring communities | Your community



Welcome!

This site will provide you with information and tools to help you get your community energy project going. It's an exciting journey that lots of other communities are taking. Community scale energy puts the power back in the hands of the community, who decide what, where and when, and generate a significant local income.

About renewable energy

Understanding your community's energy generation potential. Find out the key features of different renewable energy technologies.

Start a project

Understand the different steps your community can take to initiate a renewable energy project.

Where to get help

Look at how Communities for Renewables and others can help your community. Find out who we are, and how you can talk to us.

[Contact us](#)
[Community and project pages](#)

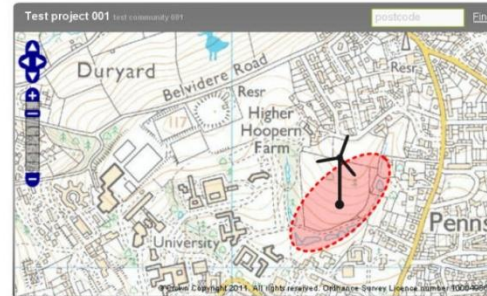


Search

communitiesforrenewables

Search
[Account or log out](#)
[FAQ](#)

Home | Info and resources | Inspiring communities | Your community



Map tools Info

Turbines **Drawing** Map layers

Small 5 kW-50 kW 15m-30m
 Medium 50 kW-150 kW 35m-60m
 Large 500kW-2.5 MW 60m-100m+

Information more details Info

Warning Within 5 km of EXETER Airport
 Size: Large
 Windspeed: 6.4 m/s
 Notes edit

Lorem ipsum dolor sit amet, consectetur adipiscing elit, sed do eiusmod tempor incididunt ut labore et dolore magna aliqua.

Getting started | Neighbours | Access and Infrastructure | Land Owner | Other | Summary

Wind speed

Size of turbine(s)?

Landscape and environmental restrictions

Many areas in the South West are designated for ecological, scientific or cultural heritage reasons. Some designations (such as National Park) are likely to prevent large wind turbines. Other designations may mean additional impact studies and negotiations with relevant authorities will be required.

[Close](#)

Guidance

Wind turbines need to be located on exposed sites away from residential properties, and with suitable access for large components.

Most exposed sites in the South West will have a good wind resource. The minimum long-term average wind speed require to make a project economically viable depends on a whole range of issues including the type of turbine to be used, project costs, electricity prices and finance costs.

As a general guide:

- Low: < 6.5m/s
- Medium: 6.5m/s - 7m/s
- Good: >7m/s



[Contact us](#)
[Community and project pages](#)



[Terms & conditions](#)
[Disclaimer](#)
[Privacy policy](#)
[Feedback](#)

www.communities4renewables.co.uk

Communities for Renewables: Support Programme

European funding:

- 2011-2015
- Community support
- Community events
- Work with consultees
- Lobbying case studies
- Communications



- Needs sponsorship match funding

Communities for Renewables: Community development

Our approach:

- Work with communities, local authorities and statutory consultees
- Bring development experts to proactive ambitious community energy groups to help them achieve their goals
- Assist networking and learning between community energy initiatives
- Help communities generate income through part ownership of projects
- Attract investment to fund community driven projects by offering a portfolio of community projects to investors
- Transparent, 'open book' approach
- Independent, not for profit, CIC

Questions?