

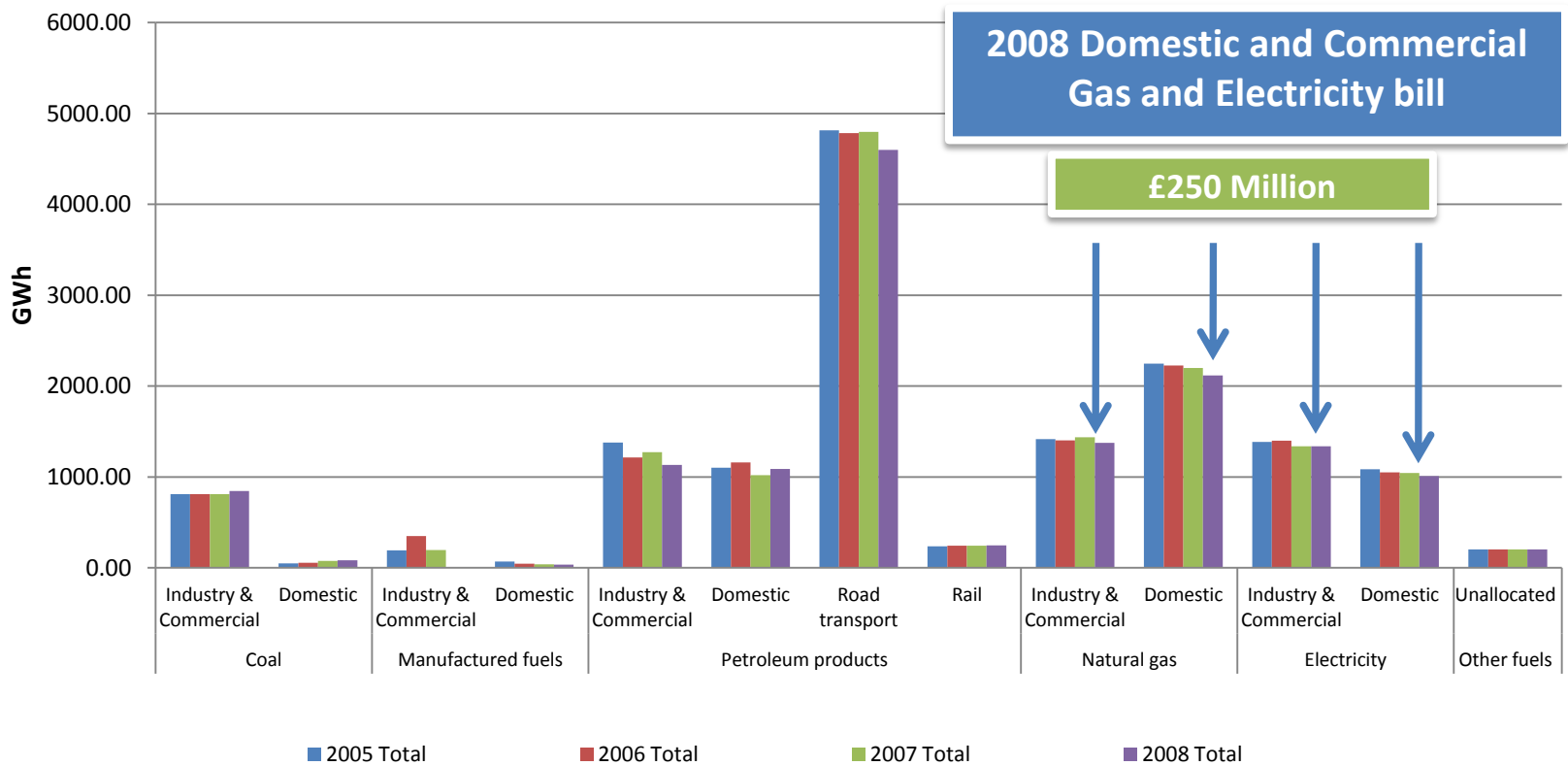
Wiltshire Council and renewable energy

December 2011
Vincent Albano
Climate Change Officer
Wiltshire Council ECO Team

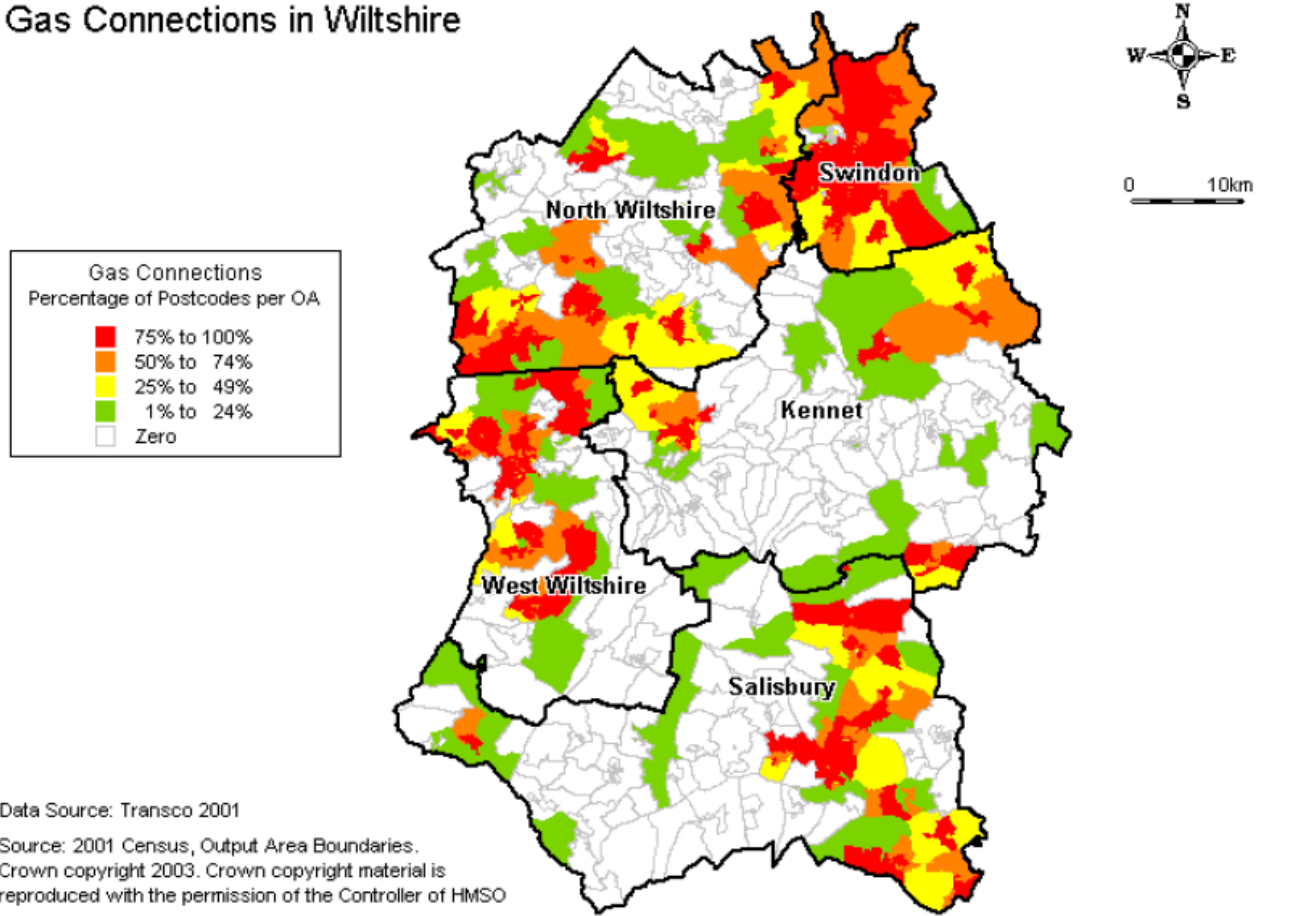
Outline

- The Challenge
- How the council is doing its bit...
- ...and where you come in
- Questions

Wiltshire energy consumption by fuel type

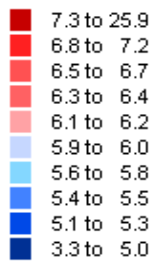


Gas Connections in Wiltshire



Fuel Poverty in Wiltshire

Fuel Poverty % in LSOA
Equal count in each range

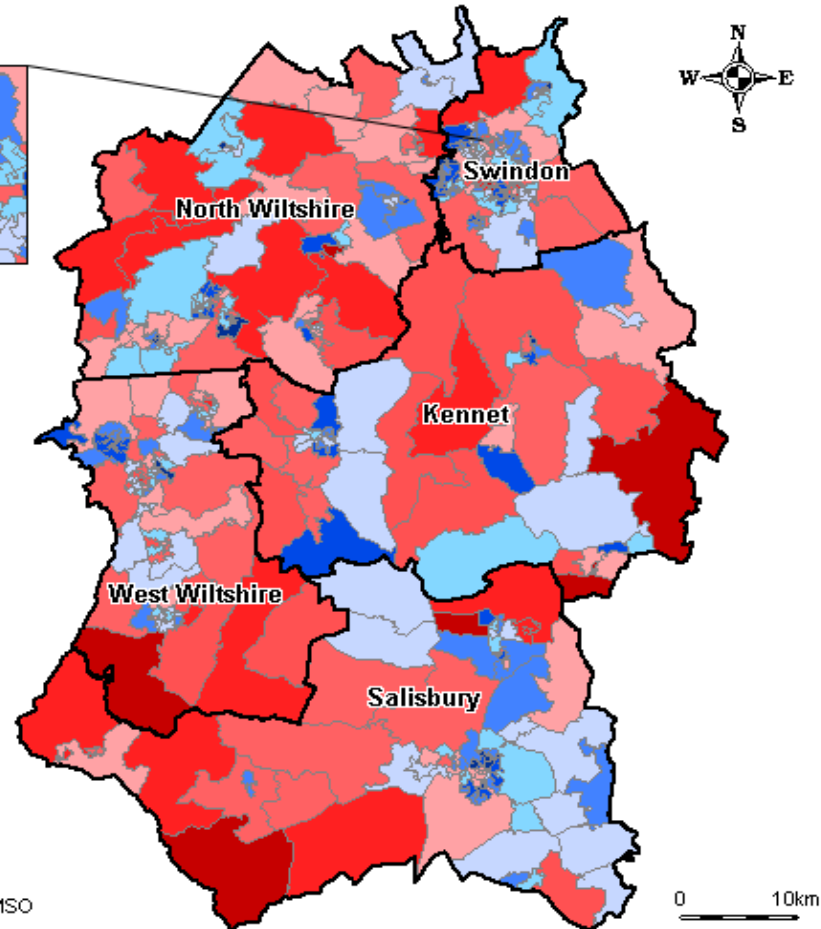
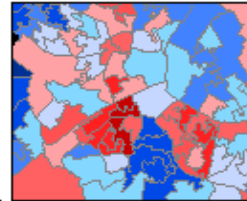


Black lines are district boundaries

Grey lines are lower level super output areas

Data modelled by the University of
Bristol and CSE from 2001 Census
and 2003 English House Condition Survey

Source: 2001 Census, Output Area Boundaries.
Crown copyright 2003. Crown copyright material is
reproduced with the permission of the Controller of HMSO



Council commitments

- target to reduce our carbon footprint by 20% by 2013/14 (11,823 tCO₂)
- **What we are trying to achieve**
 - to reduce our annual bill for energy and transport
 - to reduce CRC liabilities
 - to improve our reputation by reducing its environmental impact while saving money
 - to lead by example in the low carbon transition for Wiltshire



Carbon management

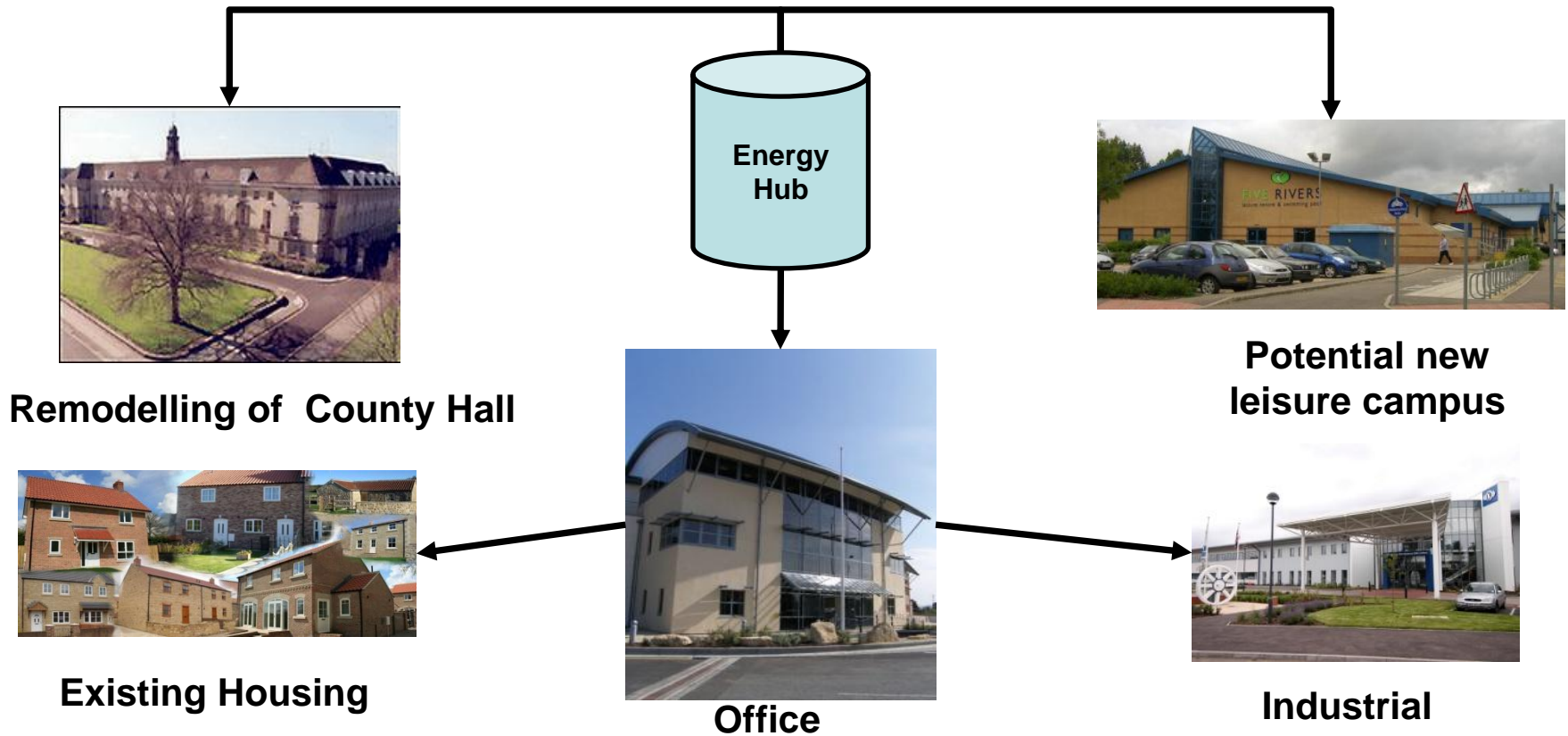
How will we achieve our commitments?

- Automatic Meter Reading (AMR)
- Staff green champions & campaigns
- £4.2m energy efficiency programme
- Energy management system (BS16001 accreditation)
- Oil to biomass conversion
- Rationalising office accommodation



District Energy for Trowbridge? (and other areas)

Heat and electricity



Where new development comes in...

How do we help each other to make this happen?

What links can be made between your site and other sites?

What does the Council need to do to help you?

How do we ensure that there are third parties that want to invest in energy infrastructure in Wiltshire?





Questions?