

What needs financing: the potential of sustainable energy in the south west

Cheryl Hiles

Director of Sustainable Energy Delivery



Presentation outline

- What needs financing in the SW?
- What are the market failures?
- Stimulating the debate on how the bank could help



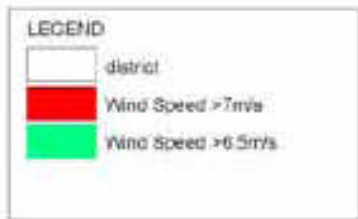
Sustainable energy is underpinning our economic growth

- **10,000 jobs** in sustainable energy the SW, **5,000 jobs** in renewable energy
- **78% increase** in the past 2 years;
160 % increase over 5 years
- GVA from renewable energy increased by **17% from £215 million to £251 million** in the past 2 years
Total value of sustainable energy jobs to the SW is **£400 million**
- **731 businesses** thought to be active in the sustainable energy sector

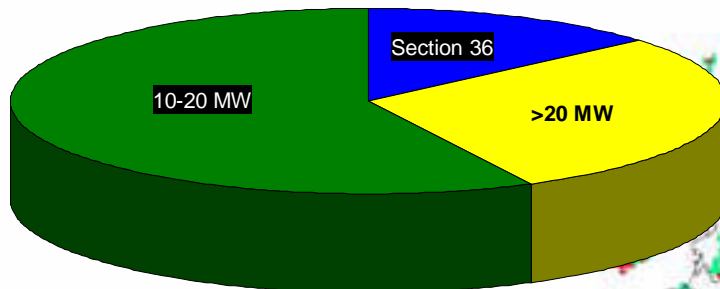
2010
RENEWABLE
FUTURES
PIONEERING THE DECADE OF DELIVERY



Figure 17: Wind speeds in the South West



Wind resource breakdown



2020 forecast:

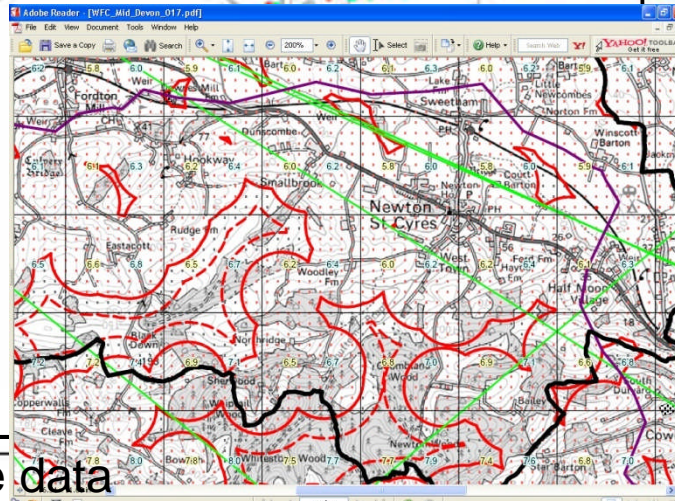
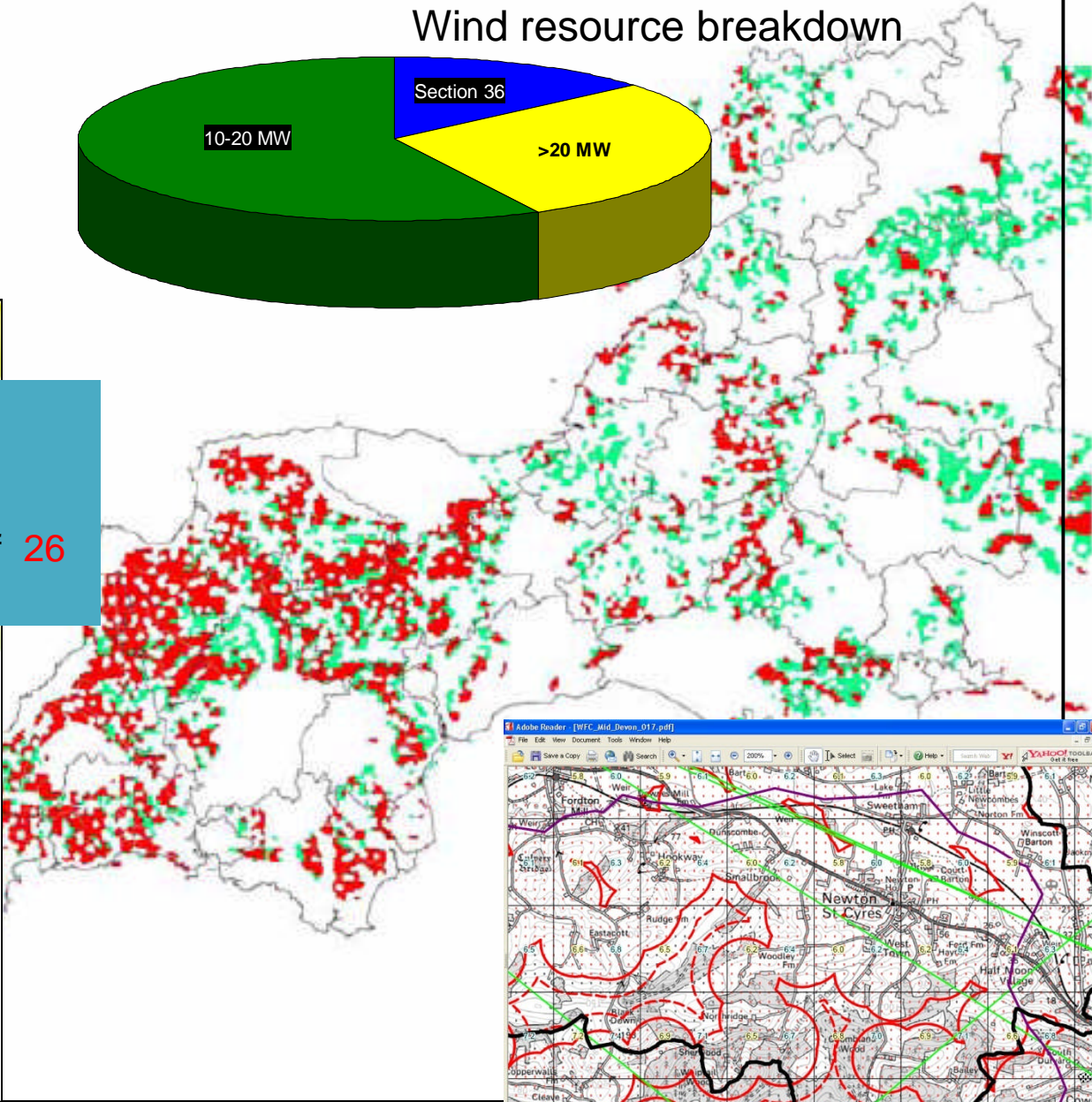
129 TWh total
 15% RE = 19 TWh
 + energy efficiency savings of 26 TWh

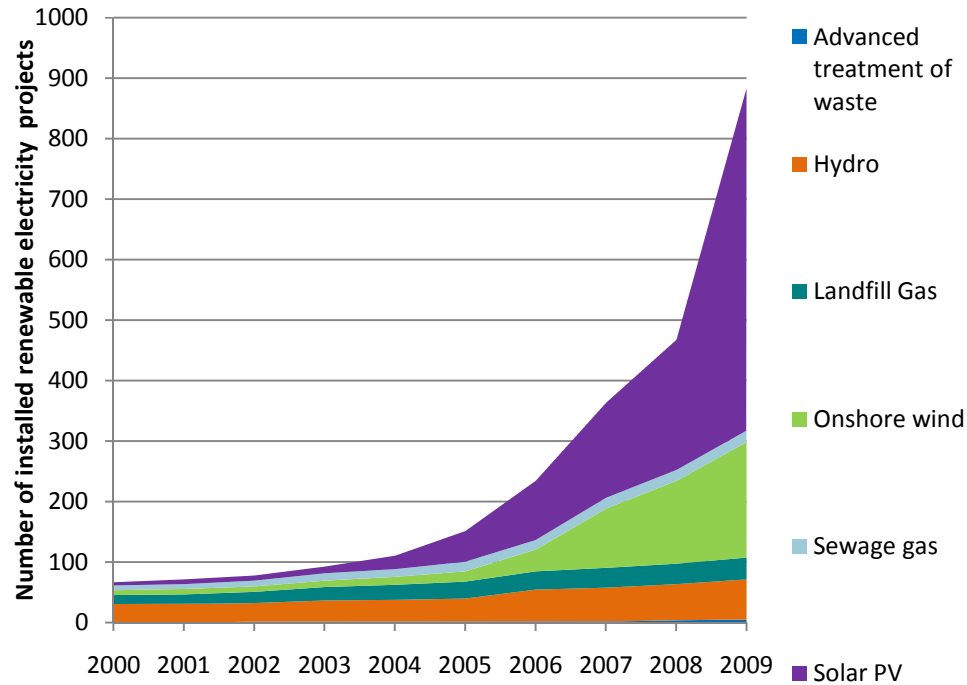
The road to 2020

An analysis of renewable energy options in the South West of England

A report by Regen SW, in association with the South West RDA.

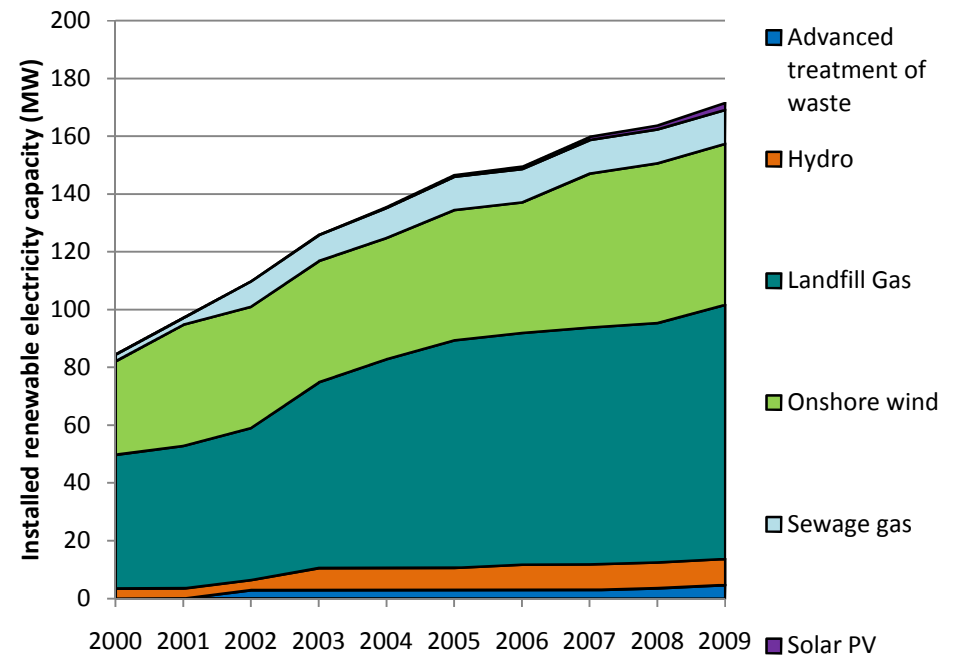
September 2008

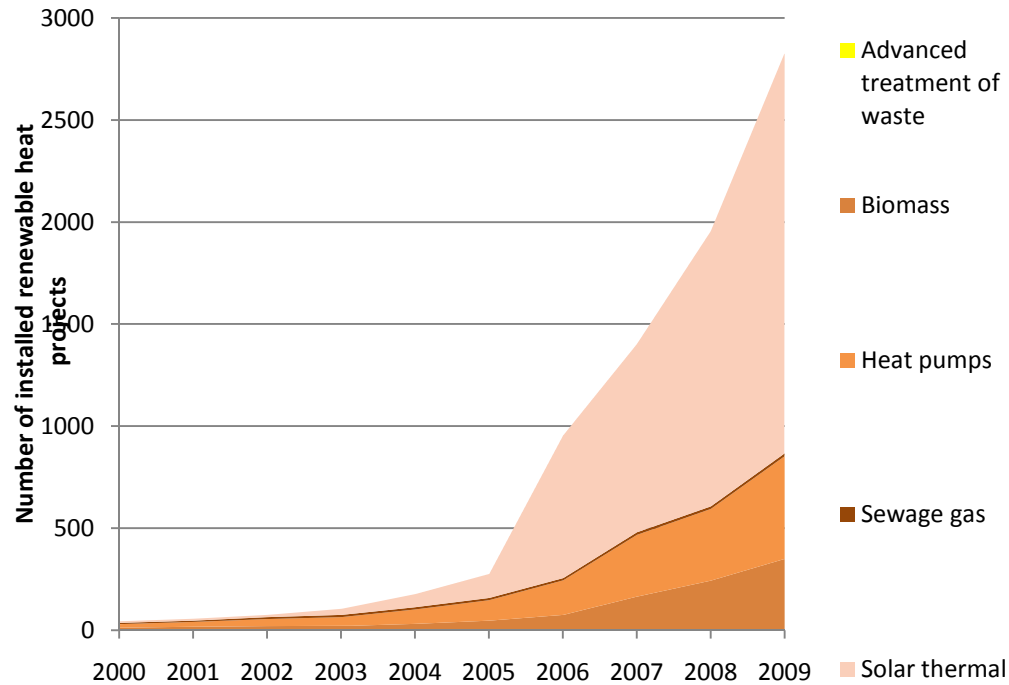




Deployment is increasing....

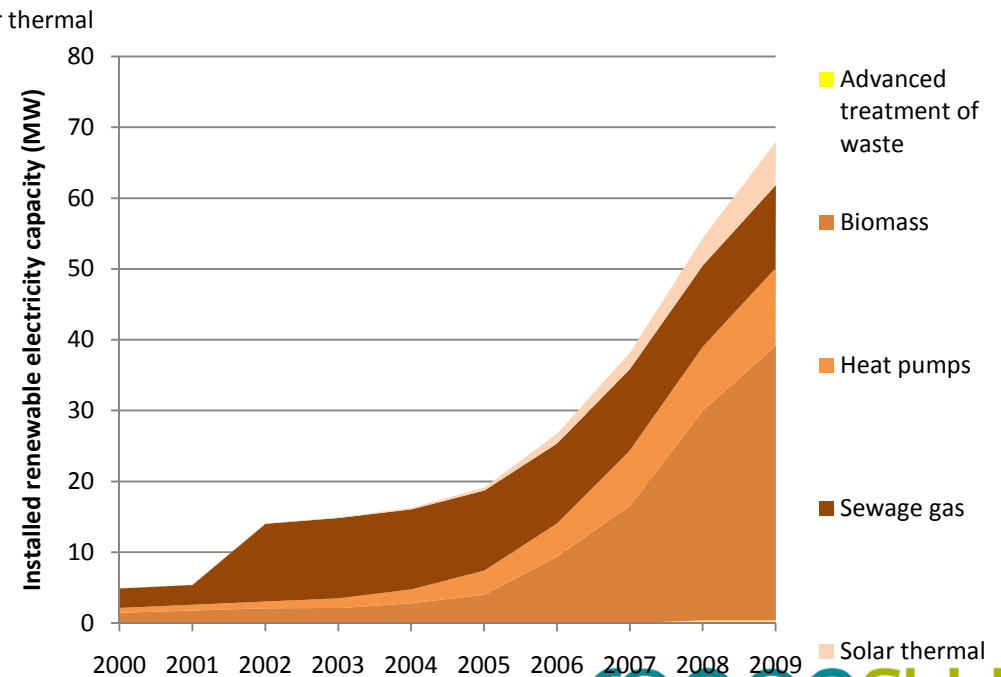
...but in a decade we have not even doubled our installed capacity.



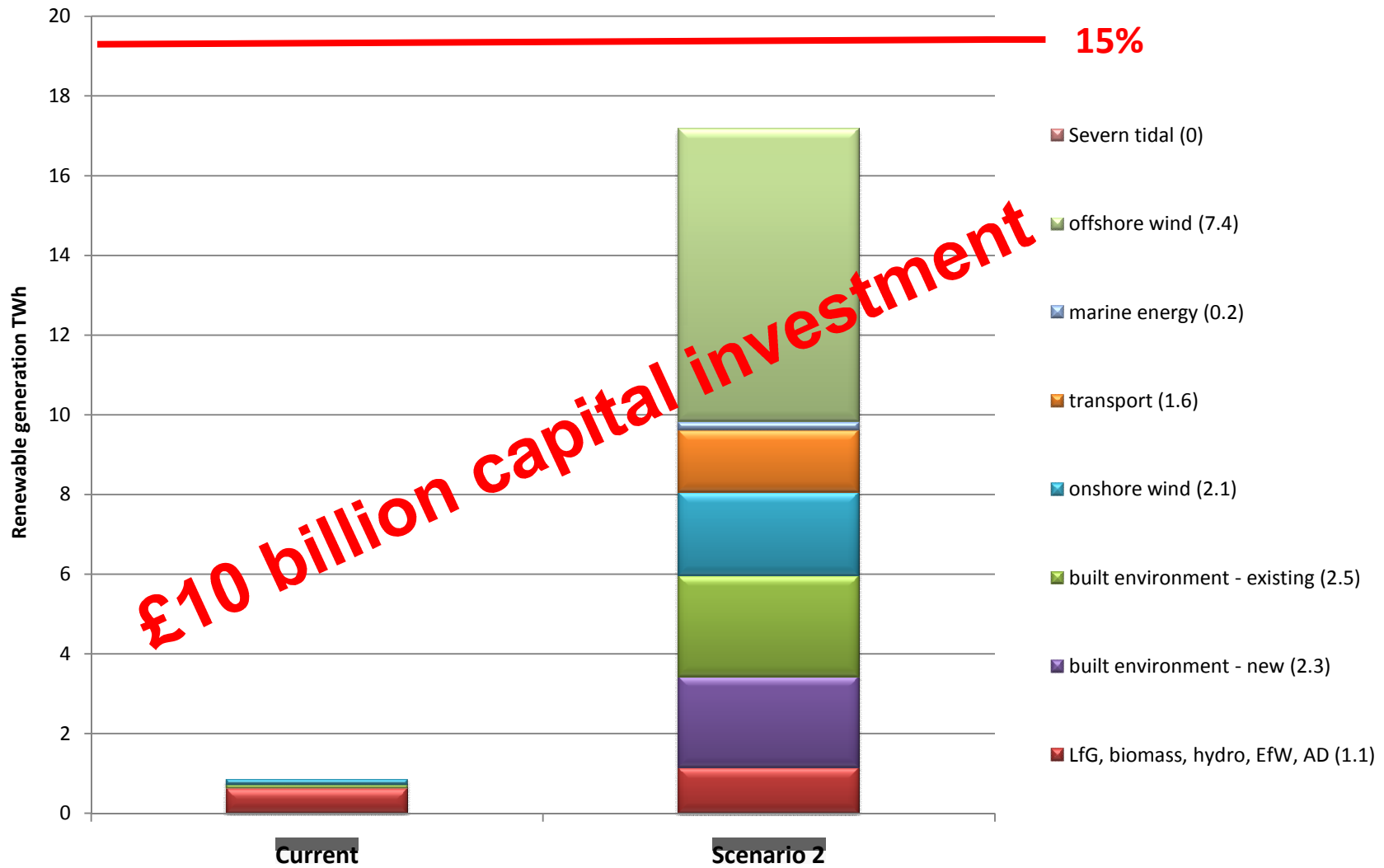


The number of renewable heat installations has increased substantially.....

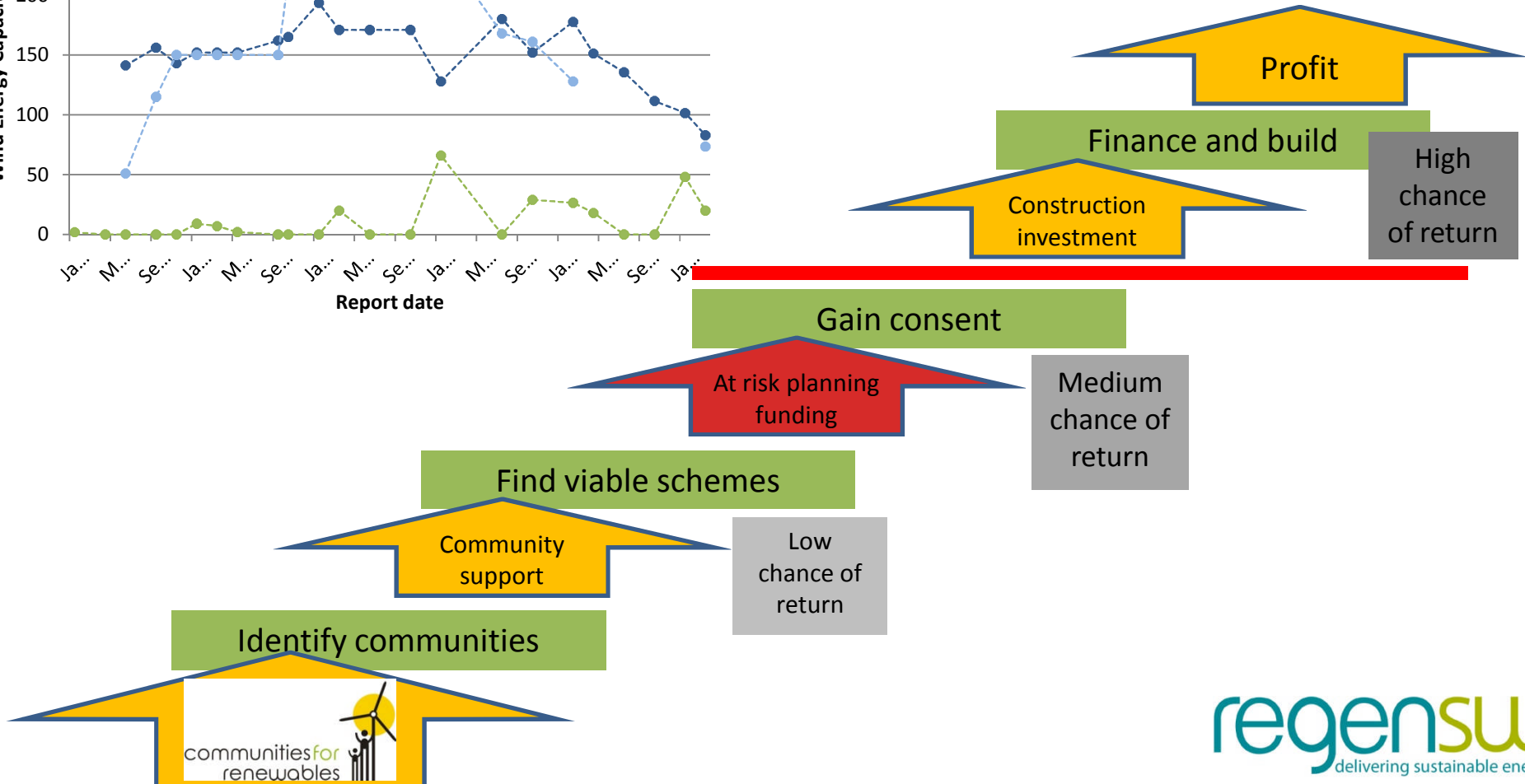
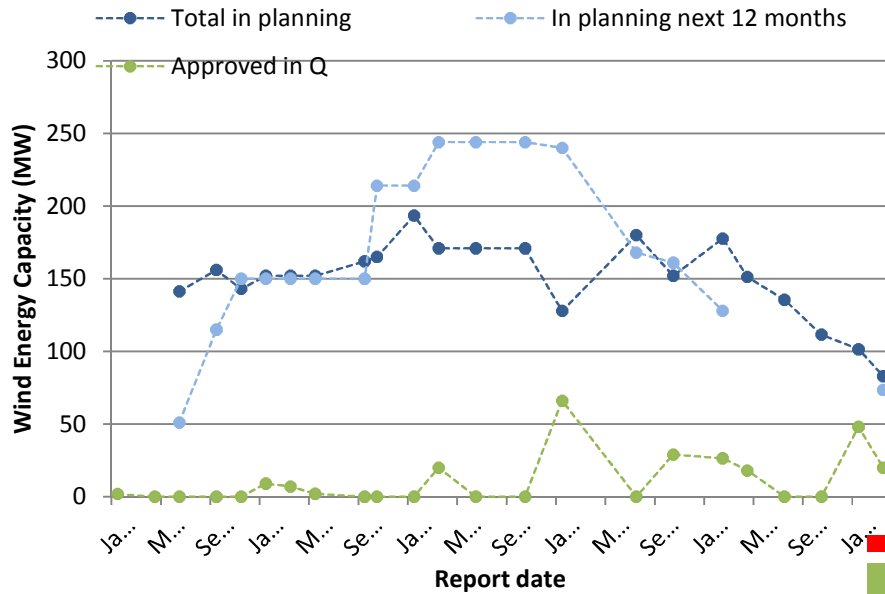
....but we started from a very low base.



Contributing to the 2020 target – without the Severn Barrage

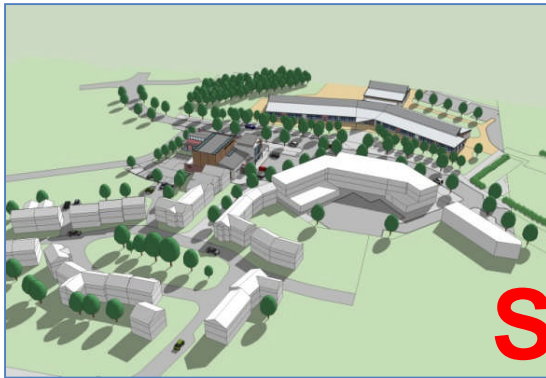


Onshore wind:



Cranbrook; East of Exeter

New zero carbon development



Signed and sealed!

- £30m – £40m low carbon investment
- 6MWe & 17MWth biomass CHP serving 2900+ homes
- Private sector ESCo proposition
- £28m public sector infrastructure funding package
- £4.1m HCA low carbon infrastructure grant

Stimulating debate:

Should the GIB....

-just focus on the lack of finance?
-take on the ‘aggregation challenge’?
-be flexible enough to support innovative local solutions?

Will the GIB facilitate the delivery of our 2020 ambitions?